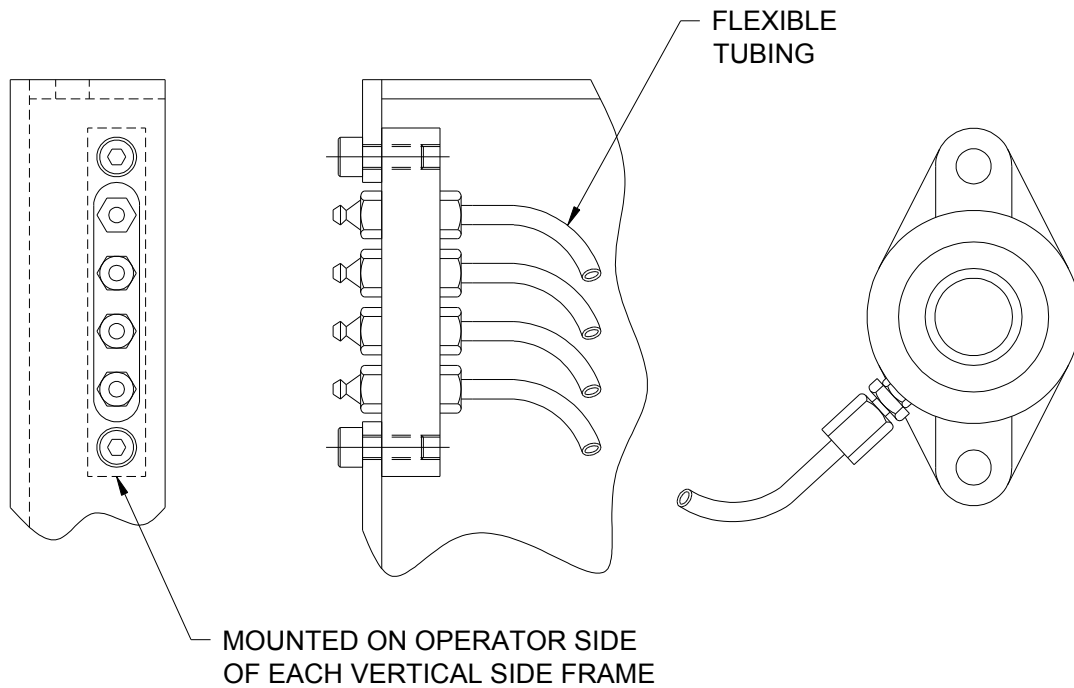


EXTERNAL LUBRICATION MANIFOLD

The AccraTec Model T4M and T6M elastic thread surface unwind systems may be provided with an external lubrication manifold. The manifold allows lubrication of the operating drive components without the requirement to remove the guards.

A lubrication manifold with exposed fittings is installed on the operator side of each side frame. Nylon tubing connects each fitting to a drive component requiring lubrication.



AccraTec will provide a quotation for a thread break detection system upon request.

Email request to Daniel J. Heaney at dan@accratec.com
Or contact via the information below.