

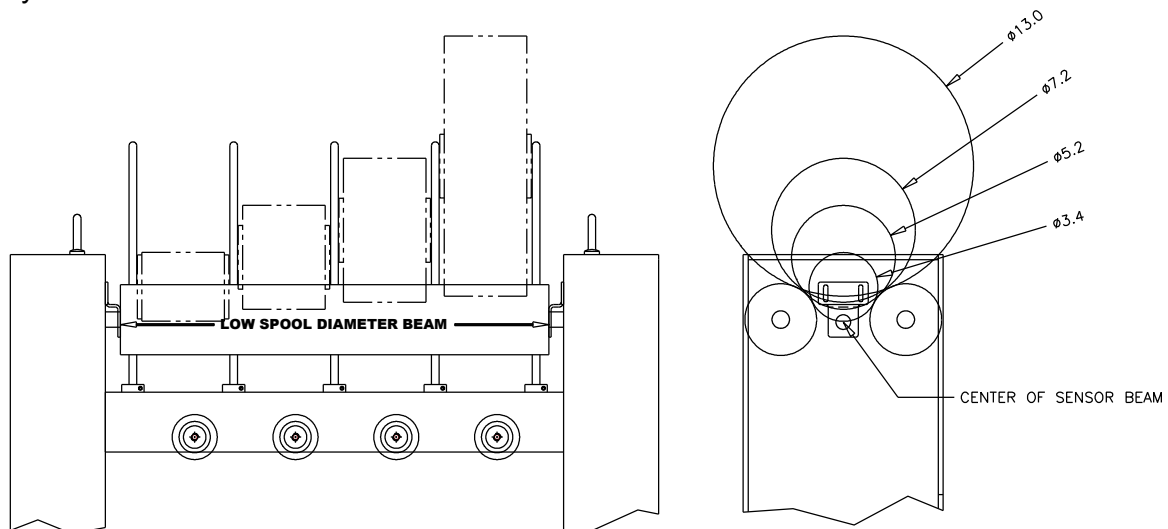
## T-SERIES UNWIND SYSTEM LOW THREAD SPOOL DIAMETER DETECTION

The Accratec T-Series elastic thread unwind systems may be provided with an optional Low Thread Spool Diameter Detection system.

The thread spool diameter decreases as the spool is being unwound which, results in the spool lowering between the unwind system spool drive rolls. The low spool diameter detection system is aligned to sense the lowest spool on a tier of thread spools being unwound. The sensor setting is adjustable, allowing the operator to align the system for an optimum advance warning of the requirement to stop and change the spool.

The system consists of a self-contained visible laser diode emitter and an opposing photoelectric sensor. When the laser beam is broken by the lowest thread spool, an electronic signal is created that may be customer wired to an alarm or the production machine process control. The system sensors are mounted in vertical slots located in the T-Series unwind system side frames at each tier.

The low thread spool detection system is supplied mounted and wired on the unwind system and includes: a 24 VDC power supply, and terminals for alarm signal connection by the customer.



AccraTec will provide a quotation for a standard or modified T-Series Unwind system upon request.

Email request to Daniel J. Heaney at [dan@accratec.com](mailto:dan@accratec.com)

Or contact via the information below.